

Series : FTNX/FTBX/FTVX



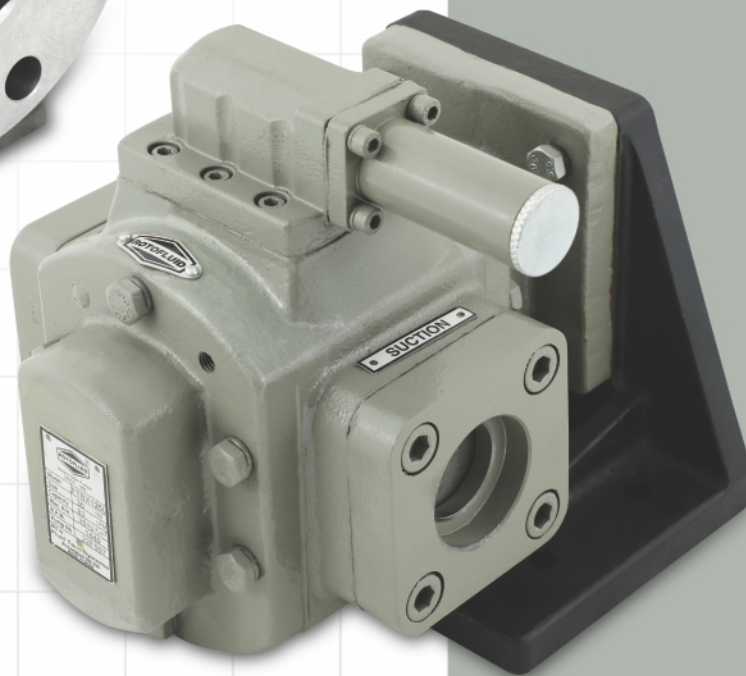
Rotary Gear Pumps
SINCE : 1993

Perfect Solution

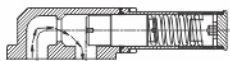
for Transfer of Oil, Viscous Liquid
& Petroleum Product



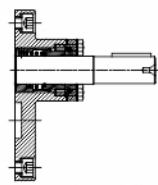
FOOT-MOUNTED



L BRACKET



PRESSURE RELIEF VALVE



MECH. SEAL IN STUFFING BOX



An ISO 9001:2015 Certified Company

Fluid Tech Systems

Ahmedabad - 382 430. (Guj.) INDIA

एन. एस. आई. सी.
NSIC
ISO 9001 : 2008



*“Let Our
Quality Speak
For Itself”*

ADVANCED TECHNOLOGY FOR PUMPING VISCOUS LIQUIDS



Rotary Gear Pumps
SINCE : 1993

ROTOFLUID Pumps having established in the year 1993 has become an integral part of most industries. Based in Ahmedabad, India, we are involved in manufacturing, quality control, selling, installing and servicing of Rotary Gear Pumps. Fluid Tech Systems offer “**ROTOFLUID**” brand gear pump Model “**FTNX/FTBX/FTVX**” which is heavy duty flange and foot mounting type positive displacement rotary gear pump. Model “**FTNX/FTBX/FTVX**” is modified version of Model “**FTRN/FTRB/FTRX**” to achieve high pressure. These pumps having doubled helical finished gears and hardened & ground shafts. Due to double helical gear it prevent axial load and side thrust which help to increase life and performance of pump. In these pumps size ½” to 2” are provided with thread at end of suction & delivery and they are available with foot or flange mounting, But in size 2½” to 6” are provided with flange at the end of suction & delivery and they are available with foot mounting only. These pumps flange are as per standard AFA/ANSI 300 class.

MODEL & PERFORMANCE CHART

PUMP MODEL (SUCTION & DELIVERY) FTNX/FTBX/FTVX	CAPACITY			RECOMMENDED MOTOR BHP AT 1440 R.P.M.		
	LPM	US GPM	M ³ /hr	Up to 7 kg./cm ²	Up to 14 kg./cm ²	Up to 20 kg./cm ²
50 ½" X ½"	S 5	1.3	0.3	0.5	1.0	1.5
	M 8	2.1	0.4			
	L 15	3.9	0.9			
100 1" X 1"	S 25	6.6	1.5	1.5	2.0	3.0
	M 30	7.9	1.8			
	L 40	10.5	2.4			
125 1¼" X 1¼"	S 50	13.2	3.0	3.0	5.0	7.5
	M 60	16.6	3.6			
	L 80	21.1	4.8			
150 1½" X 1½"	S 100	26.5	6.0	5.0	7.5	10.0
	M 125	33.0	7.5			
	L 150	39.7	9.0			
200 2" X 2"	S 165	43.5	9.9	10.0	12.5	15.0
	M 200	53.0	12.0			
	L 250	66.2	15.0			
250 2½" X 2½"	S 300	79.5	18.0	15.0	20.0	25.0
	M 330	87.1	19.8			
	L 350	92.7	21.0			
300 3" X 3"	S 400	106.0	24.0	25.0	30.0	40.0
	M 450	119.0	27.0			
	L 600	159.0	36.0			
400 4" X 4"	S 700	185.0	42.0	40.0	50.0	60.0
	M 800	212.0	48.0			
	L 900	238.5	54.0			
500 5" X 5"	S 1000	265.0	60.0	60.0	75.0	100.0
	M 1200	318.0	72.0			
	L 1400	371.0	84.0			
600 6" X 6"	S 1650	435.8	99.0	100.0	120.0	150.0
	M 1825	482.1	109.5			
	L 2082	552.0	125.0			

MODEL SELECTION

FTBX/FTNX :

For clean viscous liquid having sufficient values such as Vegetable Oil, Animal Oil, Fish Oil, Clean Tube Oil, Gear Oil, Hydraulic Oil, Glycerin, Automotive & Diesel Engine Oils etc. For intermitted duty, the bush bearing type of pump (FTBX) is used and for continuous duty, needle roller bearing type of pump (FTNX) is selected.

FTVX :

For liquid having low viscosity, low lubricating values, impure/dirty Crude Oil, dirty Lube Oil, HSD Kerosene, Sugar Solutions, LDO Paints, Wood Pulp, Varnish, Turpentine etc.

SALIENT FEATURES

- Heavy duty foot cum flange mounting type Gear Pump designed for continuous application.
- Working Pressure upto 20 Bar.
- Size from ½" to 6" to handle flow from 5 LPM to 2082 LPM.
- Can handle maximum viscosity 75000 CST.
- Can handle maximum temperature 250°C.
- Herringbone rotor design eliminate side thrust.
- Modified tooth profile enhance tooth life.
- Double helical gear design prevent axial load.
- Low leakage path by design improve volumetric efficiency.
- Shorter bearing span reduces bending effect.
- Optionally vertical mounting available.

MATERIAL OF CONSTRUCTION

Model	Material For FTNX/FTVX	Material For FTBX
Pump Body	CI/CS/SS	CI/CS/SS
Front Cover	CI/CS/SS	CI/CS/SS
Back Cover	CI/CS/SS	CI/CS/SS
Gland Cover	CV/CS/SS	CV/CS/SS
Rotor/Stator Shaft	EN-19/SS	EN-19/SS
Gear	EN-24/SS	EN-24/SS
Needle/Bush Bearing	INA/IKO [Japan]	Non-Ferrous
Wear Plate	Bronze	Bronze
Sealing	Oil Seal / Mech. Seal	"GFO" Pack Teflon / Mech. Seal
R.V. Housing	Mild Steel	Mild Steel
R.V. Piston	EN-8	EN-8
R.V. Spring	Spring Steel	Spring Steel
R.V. AD. Screw	EN-8	EN-8
Key	EN-8	EN-8
Hex - Bolt	Mild Steel	Mild Steel

APPLICATION

- Power plant
- Steel plant
- Cement plant
- Bitumen plant
- Petroleum industries
- Refineries
- Pumping station
- All kind of liquid loading and unloading.

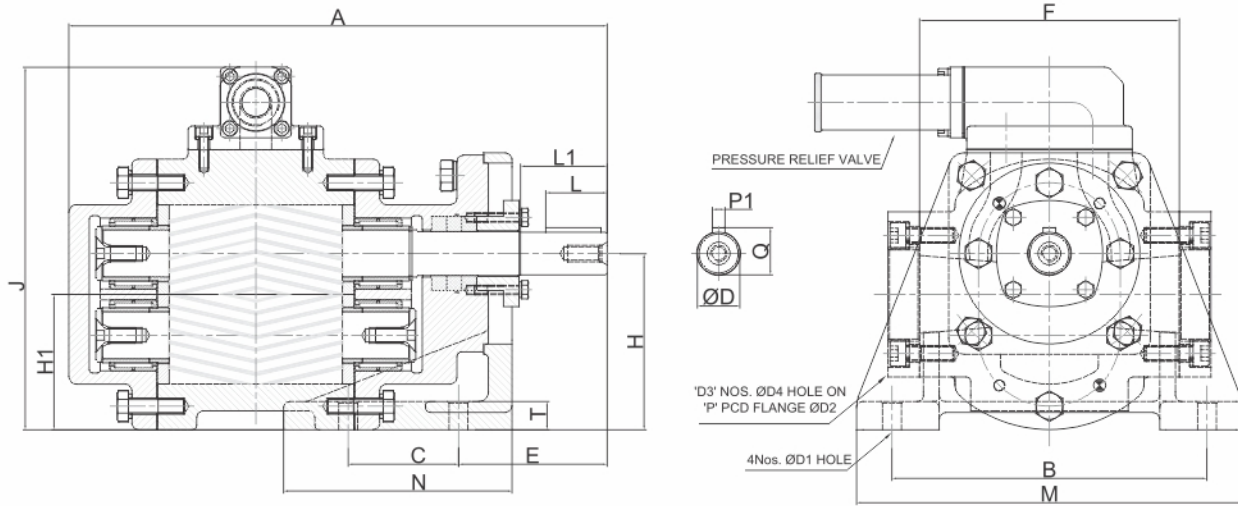
ACCESSORIES

- Stand and Base Plate
- Product Connecting Flanges
- Motor and Gear Reducers
- Variable Frequency Drives
- Electric Motor Stator
- Couplings.

ADVANCED TECHNOLOGY FOR PUMPING VISCOUS LIQUIDS

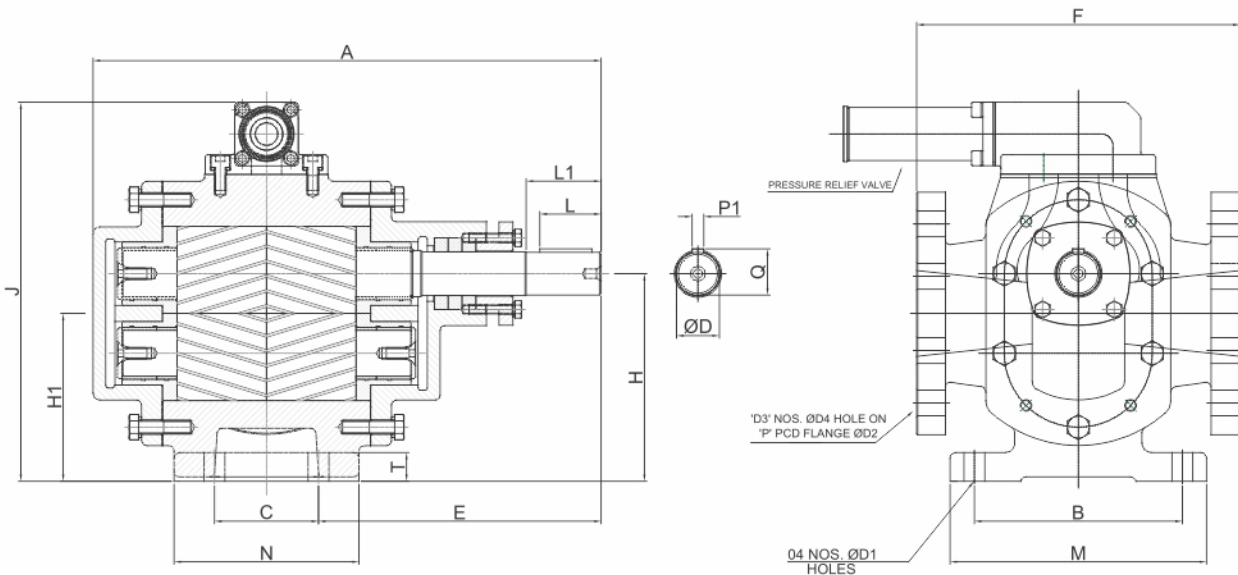


Rotary Gear Pumps
SINCE : 1993



DIMENSIONAL DRAWING DETAILS

PUMP MODEL FTNX/FTBX		DIMENSIONS																				“WEIGHT OF PUMP (IN KG)”		
		OVERALL					MOUNTING							FLANGE					SHAFT					
		A	M	N	F	J	B	C	E	H	H1	T	ØD1	ØD2	D3	ØD4	P	ØD	L	L1	P1		Q	
L BRACKET	50	203.3	155	95	100	161	120	40	60	80	64.75	12	9	52	4	M8	11.5	11.5	22	27	4	13	7.5	
	100	223.7	160	105	120	177	125	45	68	90	73	12	9	70	4	M8	15	15	24	30	5	17	13.5	
	125	256	200	120	135	185.5	155	50	81	90	70	15	9	80	4	M10	21	21	30	40	6	23.5	17	
	150	293	220	130	145	208	170	55	95	100	77.5	17	12	90	4	M12	24	24	39	50	8	27	24	
	200	342	245	145	165	230.5	200	70	94	112	86	18	12	105	4	M12	27	27	39	55	8	30	37	



DIMENSIONAL DRAWING DETAILS

PUMP MODEL FTNX/FTBX		DIMENSIONS																				“WEIGHT OF PUMP (IN KG)”		
		OVERALL					MOUNTING						FLANGE					SHAFT						
		A	M	N	F	J	B	C	E	H	H1	T	ØD1	ØD2	D3	ØD4	P	ØD	L	L1	P1		Q	
FOOT-MOUNTED	50	199	130	80	100	160	100	50	105	80	67.5	12	9	50	4	M6	49.5	11.5	22	27	4	13	7.5	
	100	222.7	160	85	120	186	130	55	116.5	100	84.25	16	9	70	4	M8	68	15	24	30	5	17	13	
	125	256	165	100	135	207.5	130	64	136	112	92	15	9	80	4	M10	78	21	30	40	6	23.5	17	
	150	293	185	120	145	240	145	82	155	132	109.5	18	12	90	4	M12	92	24	39	50	8	27	24	
	200	342	225	130	165	278.5	180	90	178	160	134	20	12	105	4	M12	106.07	27	39	55	8	30	35	
	250	393.5	185	140	240	291.5	140	95	210.8	160	131	25	15	190.5	8	M14	149.2	32	49	55	10	35	53	
	300	440	222	160	280	328.5	180	90	244.6	180	145.5	25	18	210	8	22.2	168	37	53	65	10	40	80	
	400	479	230	180	300	370.5	180	130	257.5	200	160	25	18	254	8	22.2	200	47	58	83	14	50.5	110	
	500	549	260	235	340	426	200	150	273	225	179	26	22	279.4	8	22.2	235	52	70	80	16	56	160	

About Us...

FLUID TECH SYSTEMS commenced its business operation in 1993, under the able guidance of great visionary leader **Mr. Mansukh Patel**. What started off as a modest production capacity plant is today is one of the largest producers of Rotary Gear Pumps in India.

Fluid Tech Systems has various types of Gear Pumps under the Brand name of “**ROTOFLUID**” considering the need of common requirement of Gear pumps for various industries. Due to the quality and reliability, “**ROTOFLUID**” brand has been very well accepted in the domestic and overseas market.

Fluid Tech Systems's strength are its richly qualified team including its Engineers, Promoters, its proactive quality culture and its policy of winning and retaining customers.

We, at **Fluid Tech Systems's** believe that customers are the very essence of our business and to provide them with innovative and consistent products to suit their specific applications is our core focus.

The factory today houses a large 'R&D' Laboratory & 'Automated Lab Testing Bench' for testing the Rotary Gear Pumps. It is equipped with latest machineries required for product development and works in close conjunction with our customers in meeting their required end application.

Our motto is “**Let our Quality speak for itself**”.



Our Mission....

To deliver best quality product at affordable price coupled with excellent after sales service support. Remain “Always A Step Ahead in Technology” by Continuously investing in research and development to cater to new applications, industries and segments as well as improvement of our existing product ranges.



Our Vision....

Gearing up to be a “Global Leader in the World” of Rotary Gear Pumps. We adapt to the changes and meet the challenges by creative entrepreneurship, empowered teamwork, continuous improvements, environment friendly practices and optimize profits to delight our stakeholders.

International Market



* All dimensions are in millimeters. Unless otherwise stated, specifications are subject to change without prior notice as improvements are made from time to time.

Mfgd. by :

An ISO 9001:2015 Certified Company



Fluid Tech Systems

Ahmedabad - 382 430. (Guj.) INDIA

Domestic : info@rotofluidpumps.com, mail@rotofluidpumps.com

Export : marketing@rotofluidpumps.com

Website : www.rotofluidpumps.com

Distributor :